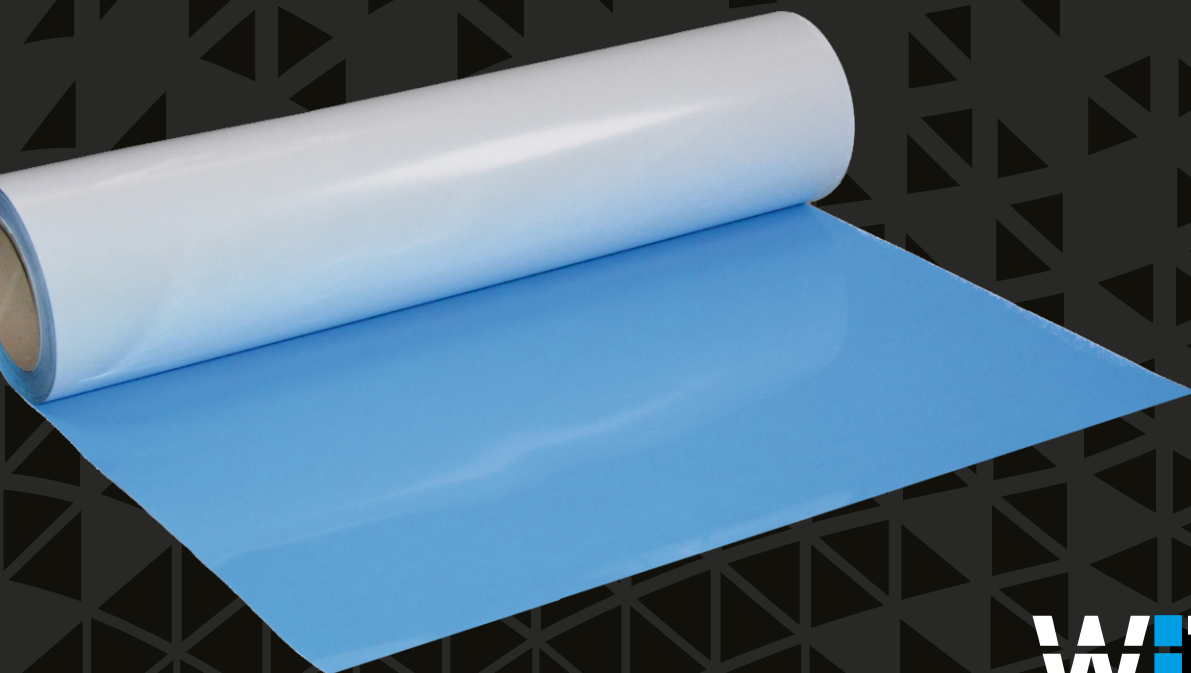


NOVA-FLEX®

HEAT TRANSFER FILM
CATALOGUE 2019

- PREMIUM ▶
- WEED-EX® ▶
- HIGH GLOSS ▶
- LOWTEMP/3SEC. ▶
- SPECIALS ▶
- PU GLITTER ▶
- HOLOGRAPHIC ▶
- MIRROR ▶
- 3D ▶
- NYLON ▶
- SUBLI-STOP ▶
- PET GLITTER ▶
- PU SOFT ▶
- REFLECTIVE ▶
- GLOW IN THE DARK ▶
- PRINTABLE ▶
- PATCH TWILL ▶



WITPAC
Competence in Heat Transfer.



To manufacture excellent quality products and offer competitive pricing is not sufficient enough to create a successful business.

To work together and listen to prospects and customers is what is necessary in this always changing market.

This is the first priority of our company.

The Witpac team is happy to create what you desire.

We are there for you!

Wim Rollfs of Roelofs

CEO

WITPAC GmbH



PREMIUM	▶ p.4
WEED-EX®	▶ p.6
LOWTEMP/3SEC.	▶ p.8
HIGH GLOSS	▶ p.10
SPECIALS	▶ p.11
PU GLITTER	▶ p.12
HOLOGRAPHIC	▶ p.13
MIRROR	▶ p.14
3D	▶ p.15
NYLON	▶ p.16
SUBLI-STOP	▶ p.17
PET GLITTER	▶ p.18
PU SOFT	▶ p.20
GLOW IN THE DARK	▶ p.21
REFLECTIVE	▶ p.22
PRINTABLE	▶ p.24
PATCH TWILL	▶ p.26
PANTONE REFERENCE FOR 1000 & 1500	▶ p.28
TRANSFER AND WASHING CONDITIONS	▶ p.29



NOVA-FLEX® 1000 PREMIUM

The 1000 Premium series is a collection of 69 colours which are thin, stretchable and opaque PU-films with a matt surface.

Thanks to the self-adhesive polyester liner you will be able to cut small letters and reposition your cut design before pressing. Due to the high washability this film is suitable for workwear.

It can be used on all types of plotters and cutting devices.

- Suitable for cotton, polyester and mixed fabrics
- Washability: up to 95 °C (metallic colours up to 80°C and neon colours up to 60°C)
- Material thickness: 90µ

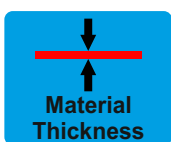
Due to different quality of garments & heat presses, we recommend to test the materials before any application



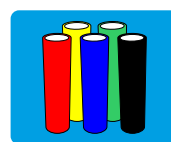
Roll sizes:
500mm x 25m, approx 20" x 27 yds
other dimensions available on request



Suitable for: 100% cotton, cotton/polyester/acrylic mixtures
For nylon/hydrophobic garments we recommend the 3900 Nylon series and for sublimated garments we recommend the 4000 Subli-Stop series



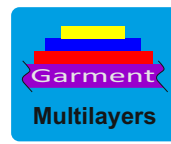
90µ 3,6 mil	Material	PU hotmelt
		PU matt face film
	Carrier	Pressure sensitive adhesive
		Polyester film 100µ



For best results we recommend to store the rolls vertically and away from heat, moisture & direct sunlight



Hot, warm or cold peel
Neon colours always cold peel



Yes, but not on metallic and neon colours.
However these colours can be transferred on top of all other colours of the 1000 Series.



Wash textile inside out

95°C 203°F	DRYCLEAN	TUMBLE DRY	DO NOT USE BLEACH
---------------	----------	------------	-------------------

Please wait 24 hours before washing & stretching



	155-165 °C = 311-329 °F
	17 - 20 sec.
	3-4 bar ≈ 43-58 psi ≈ 3-4 Kg/cm ² medium pressure

Standard colours:

01 WHITE	17 BEIGE	88 LIME YELLOW	19 LEMON YELLOW	18 MEDIUM YELLOW	10 YELLOW	90 PUMPKIN	15 ORANGE	77 DEEP ORANGE
99 SALMON	50 RED ORANGE	73 BRIGHT RED	08 RED	28 ROSE RED	94 TOMATO RED	97 ROSE	62 FUCHSIA	72 CARDINAL RED
09 BORDEAUX	96 DARK VIOLET	71 AUBERGINE	98 MAGENTA	60 DUSTY ROSE	61 BABY PINK	85 PINK VIOLET	76 VIOLET	14 PURPLE
86 BLUE VIOLET	80 LILAC	93 THISTLE	75 GLACIER BLUE	82 OCEAN BLUE	65 SKY BLUE	66 AIRFORCE BLUE	91 CORNFLOWER	06 ROYAL BLUE
95 BLUE	33 L. NAVY BLUE	05 NAVY BLUE	81 TIFFANY BLUE	83 AQUA BLUE	64 SAPPHIRE	13 TURQUOISE	92 MINT	68 AQUA GREEN
74 LIGHT GREEN	67 APPLE GREEN	63 GRASS GREEN	04 GREEN	07 FOREST GREEN	69 MILITARY GREEN	89 LIGHT BROWN	79 LIGHT CHOCO	78 DARK CHOCO
16 BROWN	02 BLACK	70 OLD GOLD	21 LIGHT GOLD	20 GOLD METALLIC	31 LIGHT SILVER	30 SILVER METALLIC	11 LIGHT GREY	12 GREY

Neon colours:

03 NEON BLUE	40 NEON YELLOW	41 NEON GREEN	42 NEON ORANGE	43 NEON PINK	44 NEON RED PINK
-----------------	-------------------	------------------	-------------------	-----------------	---------------------

Actual colours may be different. Please ask for samples to see the real colour.



Working fast with Weed-Ex[®]

- ▶ Up to 75% less labor time
- ▶ Less mistakes while weeding
- ▶ Efficient order processing
- ▶ High quality
- ▶ Competitive pricing
- ▶ Weed-Ex[®] is a patented system in the Netherlands and patent pending in many countries

Every signmaker for textile graphics knows that weeding a detailed design or a lot of text is too time consuming.

Weed-Ex[®] changes everything. It does the weeding for you, meaning you can process more flex in a shorter time period.

What is Weed-Ex[®]?

Weed-Ex[®] is a flex film with two polyester carriers. It can be cut with the Software called "CoCut Pro". The Software allows you to cut the same material with different speeds and pressures at the same time.

Double Polyester Liner

We have equipped our flex with two polyester carriers instead of one. After double cutting the inlines of the letters, you are able to peel away the second carrier together with the inner parts.

How does that work?

The outlines of the design will be cut like a standard flex. The inlines will be cut twice, meaning you cut through the flex and the first carrier. The inner parts will stick on the second carrier. So after peeling the first carrier off the second, you will have a fully weeded transfer. Now it is ready for application!

How it will be cut:

Just like any standard flex, Weed-Ex[®] will be cut in mirror. Instead of using your cutting software, we recommend using the **CoCut Pro Software**. The Software will automatically search for all the inlines in your design, select it and mark them as "double-cut".

What are the advantages?

Weed-Ex[®] saves a lot of labor time and therefore gives you the possibility to achieve a higher working capacity.

This is what you need:

We recommend the CoCut Pro software. If you don't have it, don't worry! Use your software of choice but make sure to manually select the inlines and you are set to go.
Happy weeding!

1000W WEED-EX®

The 1000W Weed-Ex® series consists of flex films (1000 Premium series) with two self-adhesive polyester carriers (each 75µ). Due to this technology you will be able to peel the inside of letters without weeding.

Thanks to the self-adhesive polyester carrier you will be able to cut small letters and reposition your cut design before pressing. The high washability allows this film to be suitable for workwear.

- Suitable for cotton, polyester and mixed fabrics
- Available in 2 colours. More colours are planned
- Washability: up to 95°C
- Material thickness: 90µ
- Application: See 1000 Premium series

Due to different quality of garments & heat presses, we recommend to test the materials before any application.

1000W-Colours:



01 - WHITE

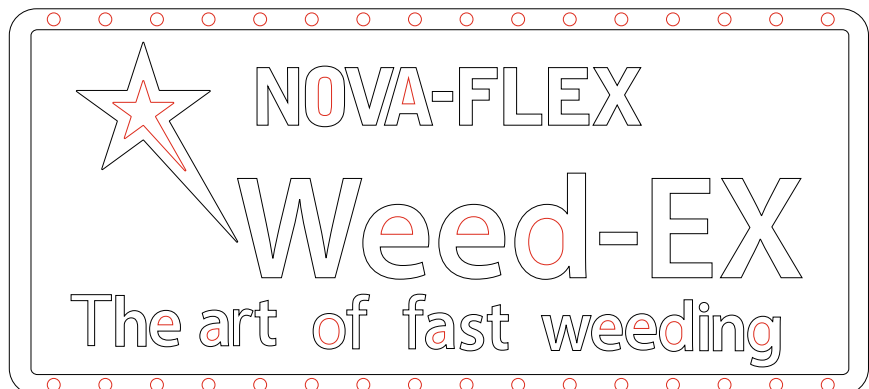


02 - BLACK



Co-Cut Professional 2017

CoCut Pro is a universal plugin for the perfect Print & Cut. The built-in macro called "Weed-Ex Cut" will allow you to automatically select the inlines which need to be double-cut.





NOVA-FLEX®1500 LOW TEMP/3 SEC.

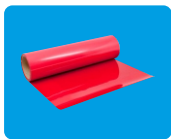
The 1500 series (Low Temp/3 Sec.) is a collection of thin and stretchable PU-films with an innovative hotmelt.

Due to the special hotmelt you are able to work with this film in 2 ways: either working fast (165°C for 3-5 seconds) or with low temperature (135°C for 8 seconds).

Thanks to the self-adhesive polyester carrier you will be able to cut small letters and reposition your cut design before pressing. It can be used on all types of plotters and cutting devices.

- Suitable for cotton, polyester and mixed fabrics
- Washability: up to 60°C
- Material thickness: 85µ

Due to different quality of garments & heat presses, we recommend to test the materials before any application.



Roll sizes:
500mm x 25m, approx 20" x 27 yds
other dimensions available on request



85µ 3,4 mil	Material	Copolyester low temp.hotmelt
	Carrier	PU matt face film
		Pressure sensitive adhesive
		Polyester film 100µ



Hot, warm or cold peel
Neon colours always cold peel



Wash textile inside out

40°C 104°F see above <i>Important</i>	or	60°C 140°F	DRYCLEAN	TUMBLE DRY	DO NOT USE BLEACH
---	----	---------------	----------	------------	-------------------

Please wait 24 hours before washing & stretching



Suitable for: 100% cotton, cotton/polyester/acrylic mixtures
For nylon/hydrophobic garments we recommend the Nylon 3900 series and for sublimated garments we recommend the Subli-Stop 4000 series



For best results we recommend to store the rolls vertically and away from heat, moisture & direct sunlight



Yes, but not on metallic and neon colours.
However these colours can be transferred on top of all other colours of the 1000 Series.



135°C = 275°F	or	165°C = 329°F
for 8 sec.		for 3 or 5 sec.
<i>see Important</i>		
3-4 bar ≈ 43-58 psi ≈ 3-4 Kg/cm ² medium pressure		

Standard colours:

01 WHITE	17 BEIGE	88 LIME YELLOW	19 LEMON YELLOW	18 MEDIUM YELLOW	10 YELLOW	90 PUMPKIN	15 ORANGE	77 DEEP ORANGE
99 SALMON	50 RED ORANGE	73 BRIGHT RED	08 RED	28 ROSE RED	94 TOMATO RED	97 ROSE	62 FUCHSIA	72 CARDINAL RED
09 BORDEAUX	96 DARK VIOLET	71 AUBERGINE	98 MAGENTA	60 DUSTY ROSE	61 BABY PINK	85 PINK VIOLET	76 VIOLET	14 PURPLE
86 BLUE VIOLET	80 LILAC	93 THISTLE	75 GLACIER BLUE	82 OCEAN BLUE	65 SKY BLUE	66 AIRFORCE BLUE	91 CORNFLOWER	06 ROYAL BLUE
95 BLUE	33 L. NAVY BLUE	05 NAVY BLUE	81 TIFFANY BLUE	83 AQUA BLUE	64 SAPPHIRE	13 TURQUOISE	92 MINT	68 AQUA GREEN
74 LIGHT GREEN	67 APPLE GREEN	63 GRASS GREEN	04 GREEN	07 FOREST GREEN	69 MILITARY GREEN	89 LIGHT BROWN	79 LIGHT CHOCO	78 DARK CHOCO
16 BROWN	02 BLACK	70 OLD GOLD	21 LIGHT GOLD	20 GOLD METALLIC	31 LIGHT SILVER	30 SILVER METALLIC	11 LIGHT GREY	12 GREY

Neon colours:

03 NEON BLUE	40 NEON YELLOW	41 NEON GREEN	42 NEON ORANGE	43 NEON PINK	44 NEON RED PINK
-----------------	-------------------	------------------	-------------------	-----------------	---------------------

Actual colours may be different. Please ask for samples to see the real colour.



NOVA-FLEX® 1100 High Gloss

The 1100 High Gloss series is a collection of thin and stretchable PU-films, which have a glossy finish.

It can be used on all types of plotters and cutters. Thanks to the self-adhesive polyester carrier you will be able to cut small letters and reposition your cut design before pressing

- Suitable for cotton, polyester and mixed fabrics
- Nova-Flex® High Gloss 1100 can be layered on each other
- Washability: up to 60°C
- Material thickness: 90µ

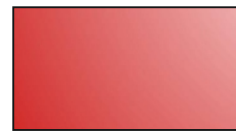
Due to different quality of garments & heat presses, we recommend to test the materials before any application.



01
WHITE

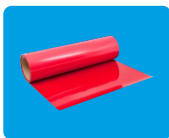


02
BLACK



08
RED

Actual colours may be different. Please ask for samples to see the real colour.



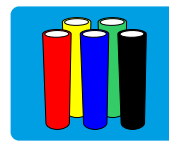
Roll sizes:
500mm x 25m, approx 20" x 27 yds
other dimensions available on request



Suitable for: 100% cotton,
cotton/polyester/acrylic mixtures



Material Thickness	90µ 3,6 mil	Material	PU hotmelt
			PU high gloss face film
		Carrier	Pressure sensitive adhesive
			Polyester film 100µ



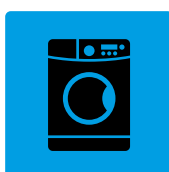
For best results we recommend to store the rolls vertically and away from heat, moisture & direct sunlight



Cold peel



Yes



Wash textile inside out

60°C 140°F	DRYCLEAN	TUMBLE DRY	DO NOT USE BLEACH
---------------	----------	------------	-------------------

Please wait 24 hours before washing & stretching



165 °C = 329 °F
12 - 15 sec.
3-4 bar ≈ 43-58 psi ≈ 3-4 Kgf/cm ² medium pressure

NOVA-FLEX® 1600 SPECIALS

The 1600 Specials series consists of PU films with a matt surface and a soft touch.

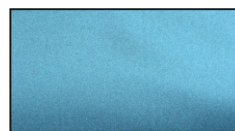
The colour effect changes with the point of view.

- Suitable for cotton, polyester and mixed fabrics
- Washability: up to 60°C
- Material thickness: 90µ

Due to different quality of garments & heat presses, we recommend to test the materials before any application.

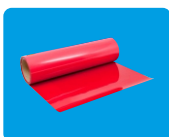


08
RED



06
BLUE

Actual colours may be different. Please ask for samples to see the real colour.



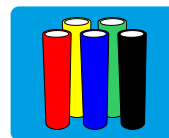
Roll sizes:
500mm x 25m, approx 20" x 27 yds
other dimensions available on request



Suitable for cotton, polyester and mixed fabrics



90µ 3,6 mil	Carrier	Copolyester hotmelt
	Material	PU colour change film
		Pressure sensitive adhesive
		Polyester film 100µ



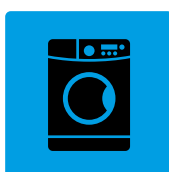
For best results we recommend to store the rolls vertically and away from heat, moisture & direct sunlight



Cold peel



Yes



Wash textile inside out

60°C 140°F	DO NOT DRY CLEAN	DO NOT TUMBLE DRY	DO NOT USE BLEACH
---------------	------------------	-------------------	-------------------

Please wait 24 hours before washing & stretching



150 °C = 302 °F
10 sec
3-4 bar ≈ 43-58 psi ≈ 3-4 Kg/cm ² medium high pressure



NOVA-FLEX®1800 PU GLITTER

The 1800 Glitter series is a collection of thin and stretchable PU-films with a subtle sparkling effect.

It can be used on all types of plotters and cutting devices.

- Suitable for cotton, polyester and mixed fabrics
- Available in 9 colours.
- Washability: up to 60°C
- Material thickness: 100µ

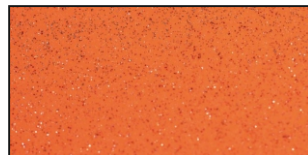
Due to different quality of garments & heat presses, we recommend to test the materials before any application.



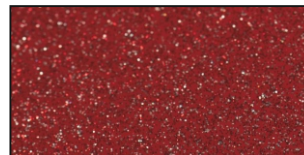
1800-Colours:



01 - WHITE



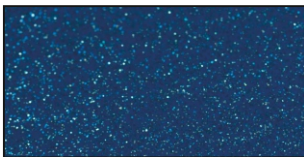
15 - ORANGE



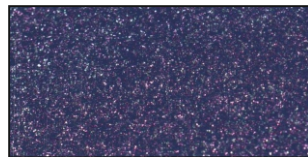
08 - RED



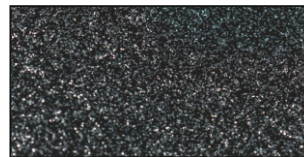
98 - PINK



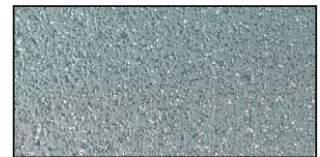
06 - ROYAL BLUE



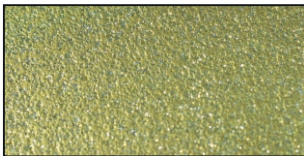
14 - PURPLE



02 - BLACK

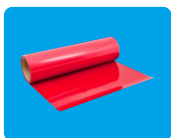


30 - SILVER



20 - GOLD

Actual colours may be different. Please ask for samples to see the real colour.



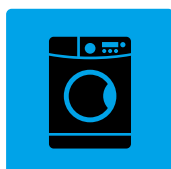
Roll sizes:
500mm x 25m, approx 20" x 27 yds
other dimensions available on request



100µ 4 mil	Material	Copolyester hotmelt
		PU glitter face film
	Carrier	Pressure sensitive adhesive
		Polyester film 100µ



Hot peel



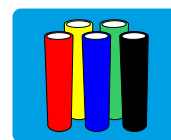
Wash textile inside out

60°C 140°F	DRYCLEAN	TUMBLE DRY	DO NOT USE BLEACH
---------------	----------	------------	-------------------

Please wait 24 hours before washing & stretching



Suitable for: 100% cotton, cotton/polyester/acrylic mixtures



For best results we recommend to store the rolls vertically and away from heat, moisture & direct sunlight



Yes



155-165 °C = 311-329 °F
17 - 20 sec.
3-4 bar ≈ 43-58 psi ≈ 3-4 Kg/cm²
medium pressure

NOVA-FLEX®1900 HOLOGRAPHIC

The 1900 Holographic series consists of very thin polyester films, which have a glossy and holographic effect.

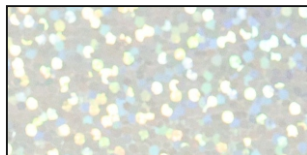
It can be used on all types of plotters and cutting devices.

- Suitable for cotton, polyester and mixed fabrics
- It is a polyester film and therefore it is possible to transfer print with sublimationpaper
- Available in 12 colours
- Washability: up to 40°C
- Material thickness: 40µ

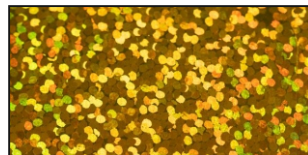
Due to different quality of garments & heat presses,we recommend to test the materials before any application.



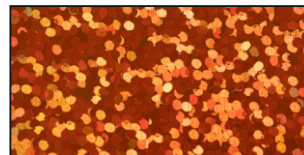
1900-Colours:



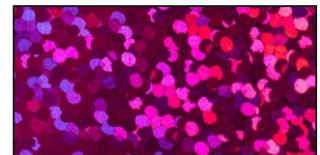
30 - SILVER



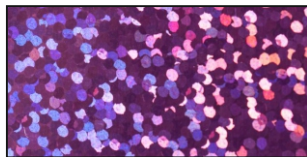
20 - GOLD



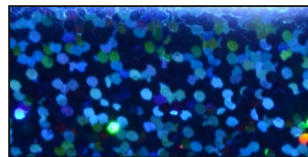
15 - ORANGE



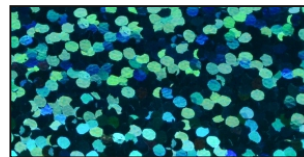
62 - FUCHSIA



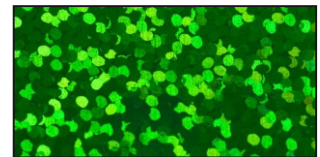
76 - VIOLET



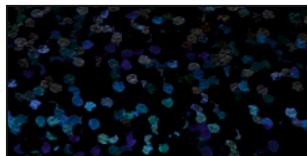
06 - ROYAL BLUE



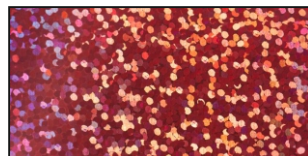
68 - AQUA



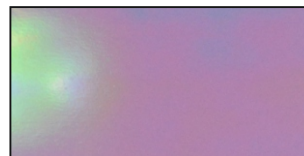
04 - GREEN



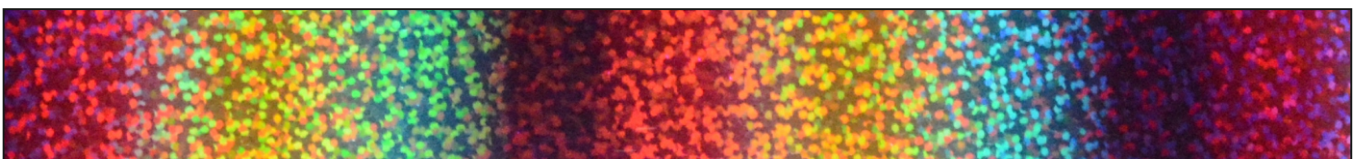
02 - BLACK



98 - PINK



97 - CLEAR



99 - RAINBOW

Actual colours may be different. Please ask for samples to see the real colour.

<p>Material Thickness</p>	<table border="1"> <tr> <td rowspan="2">Carrier Material</td> <td>Copolyester hotmelt</td> </tr> <tr> <td>Polyester holographic glossy face film</td> </tr> <tr> <td rowspan="2">Carrier Material</td> <td>Pressure sensitive adhesive</td> </tr> <tr> <td>Polyester film 100µ</td> </tr> </table>	Carrier Material	Copolyester hotmelt	Polyester holographic glossy face film	Carrier Material	Pressure sensitive adhesive	Polyester film 100µ
Carrier Material	Copolyester hotmelt						
	Polyester holographic glossy face film						
Carrier Material	Pressure sensitive adhesive						
	Polyester film 100µ						
<p>Peel</p>	<p>Cold peel</p>						
	<p>Wash textile inside out</p> <table border="1"> <tr> <td>40°C 104°F</td> <td>DO NOT DRYCLEAN</td> <td>DO NOT TUMBLE DRY</td> <td>DO NOT USE BLEACH</td> </tr> </table> <p>Please wait 24 hours before washing & stretching</p>	40°C 104°F	DO NOT DRYCLEAN	DO NOT TUMBLE DRY	DO NOT USE BLEACH		
40°C 104°F	DO NOT DRYCLEAN	DO NOT TUMBLE DRY	DO NOT USE BLEACH				

	<p>For best results we recommend to store the rolls vertically and away from heat, moisture & direct sunlight</p>
<p>Garment Multilayers</p>	<p>Yes</p>
	<p>160 °C = 320 °F</p> <p>15 sec.</p> <p>3-4 bar ≈ 43-58 psi ≈ 3-4 Kg/cm² medium pressure</p>



NOVA-FLEX® 2100 MIRROR

The 2100 Mirror series consists of thin polyester films, which have a mirror effect.

It can be used on all types of plotters and cutting devices.

- Suitable for cotton, polyester and mixed fabrics
- A polyester film and therefore it is possible to transfer print with sublimation paper
- Due to the stiffness of the polyester film this product is not suitable for larger designs
- Available in 2 colours.
- Washability: up to 40°C
- Material thickness: 40µ

Due to different quality of garments & heat presses, we recommend to test the materials before any application.

2100-Colours:

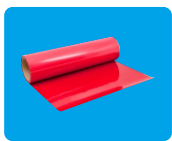
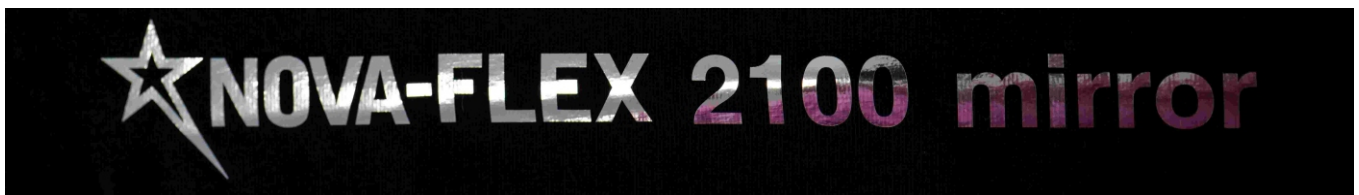


20 - GOLD



30 - SILVER

Actual colours may be different. Please ask for samples to see the real colour.



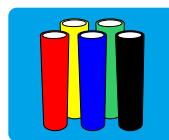
Roll sizes:
500mm x 25m, approx 20" x 27 yds
other dimensions available on request



Suitable for: 100% cotton,
cotton/polyester/acrylic mixtures



40µ 1,6 mil	Material	Copolyester hotmelt
		Polyester mirror face film
	Carrier	Pressure sensitive adhesive
		Polyester film 100µ



For best results we recommend to store the rolls vertically and away from heat, moisture & direct sunlight



Cold peel



Yes on PU Flex



Wash textile inside out

40°C 104°F	DO NOT DRYCLEAN	DO NOT TUMBLE DRY	DO NOT USE BLEACH
---------------	-----------------	-------------------	-------------------

Please wait 24 hours before washing & stretching



165 °C = 329 °F
15 sec.
3-4 bar ≈ 43-58 psi ≈ 3-4 Kg/cm²
medium pressure

NOVA-FLEX®2500 3D

The 2500 3D series is a collection of very thick, matt PU-films which have an embossed structure.

It can be used on all types of plotters and cutting devices. Due to the high material thickness this film will "hover" on your textile.

- Suitable for cotton, polyester and mixed fabrics
- Washability: up to 60°C
- Material thickness: 580µ

Due to different quality of garments & heat presses, we recommend to test the materials before any application.



2500-Colours:



01 - WHITE



18 - MEDIUM YELLOW



15 - ORANGE



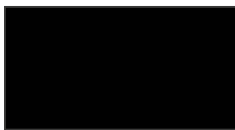
08 - RED



06 - ROYAL BLUE

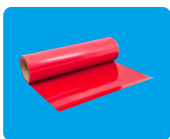


05 - NAVY BLUE



02 - BLACK

Actual colours may be different. Please ask for samples to see the real colour.



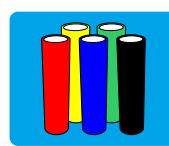
Roll sizes:
500mm x 10m, approx 20" x 11yds
other dimensions available on request



Suitable for: 100% cotton,
cotton/polyester/acrylic mixtures



580µ 22,8 mil	Carrier	PU hotmelt
	Material	PU high gloss face film
		Pressure sensitive adhesive
		Polyester film 100µ



For best results we recommend to store the rolls vertically and away from heat, moisture & direct sunlight



hot peel



Yes



Wash textile inside out

60°C 140°F	DO NOT DRYCLEAN	DO NOT TUMBLE DRY	DO NOT USE BLEACH
---------------	-----------------	-------------------	-------------------

Please wait 24 hours before washing & stretching



150°C = 302 °F
10 sec on front and 15 sec on back
4 bar ≈ 58 psi ≈ 4 Kgf/cm²
medium pressure

NOVA-FLEX® 3900 NYLON

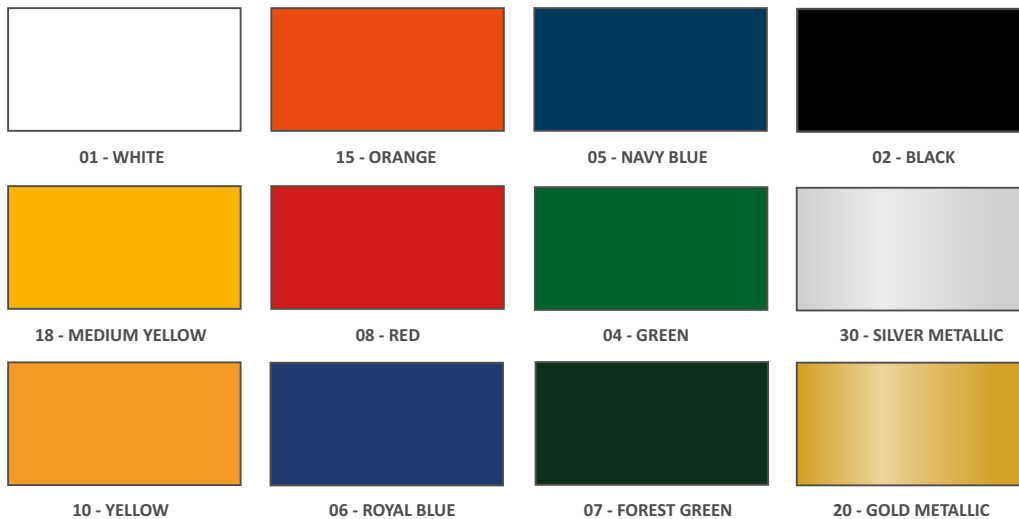
The 3900 Nylon series consists of thin PU-films which have a matt effect. It can be used on all types of plotters and cutting devices.

- Specifically for nylon, acrylic-mixtures and hydrophobic garments
- Available in 12 colours
- Washability: up to 40°C
- Material thickness: 75µ

Due to different quality of garments & heat presses, we recommend to test the materials before any application.



3900-Colours:



Actual colours may be different. Please ask for samples to see the real colour.

	Roll sizes: 500mm x 25m, approx 20" x 27yds other dimensions available on request
	75µ 3 mil
	Cold peel
	Wash textile inside out 40°C / 104°F DO NOT DRYCLEAN TUMBLE DRY DO NOT USE BLEACH Please wait 24 hours before washing & stretching

	Suitable for: nylon/hydrophobic garments and acrylic-mixtures
	For best results we recommend to store the rolls vertically and away from heat, moisture & direct sunlight
	Yes
	145°C = 293 °F 10 sec. 3-4 bar ≈ 43-58 psi ≈ 3-4 Kgf/cm ² medium pressure

NOVA-FLEX® 4000 SUBLI-STOP

The 4000 Subli-Stop series consists of PU-films which have a matt effect.

This film stops colour migration when applied on sublimated garments. The dark colours of the 1500 series can also be used as Subli-Stop.

It can be used on all types of plotters and cutting devices

- Suitable for sublimated fabrics
- Available in 20 colours
- Washability: up to 40°C

Due to different quality of garments & heat presses, we recommend to test the materials before any application.



4000-Colours:



Actual colours may be different. Please ask for samples to see the real colour.

	<table border="1"> <tr><td>105µ 4,2 mil</td></tr> <tr><td>Carrier Material</td></tr> <tr><td>PU hotmelt</td></tr> <tr><td>Blockout layer</td></tr> <tr><td>PU matt face film</td></tr> <tr><td>Pressure sensitive adhesive</td></tr> <tr><td>Polyester film 100µ</td></tr> </table>	105µ 4,2 mil	Carrier Material	PU hotmelt	Blockout layer	PU matt face film	Pressure sensitive adhesive	Polyester film 100µ		<p>For best results we recommend to store the rolls vertically and away from heat, moisture & direct sunlight</p>
105µ 4,2 mil										
Carrier Material										
PU hotmelt										
Blockout layer										
PU matt face film										
Pressure sensitive adhesive										
Polyester film 100µ										
	<p>Hot or warm peel</p>		<p>Yes, but not on metallic and neon colours. However these colours can be transferred on top of all other</p>							
	<p>Wash textile inside out</p> <table border="1"> <tr> <td>40°C 104°F</td> <td>DO NOT DRYCLEAN</td> <td>DO NOT TUMBLE DRY</td> <td>DO NOT USE BLEACH</td> </tr> </table> <p>Please wait 24 hours before washing & stretching</p>	40°C 104°F	DO NOT DRYCLEAN	DO NOT TUMBLE DRY	DO NOT USE BLEACH		<p>140 °C = 284 °F</p> <p>10 sec.</p> <p>3-4 bar ≈ 43-58 psi ≈ 3-4 Kg/cm² medium pressure</p>			
40°C 104°F	DO NOT DRYCLEAN	DO NOT TUMBLE DRY	DO NOT USE BLEACH							

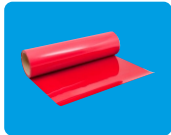


NOVA-FLEX® 6000/6100 PET GLITTER

The 6000 PET Glitter/ 6100 PET Glitter Specials series are a collection of PET-films with real glitter flakes, which create a wonderful sparkling effect!
It is suitable for working on every plotter and cutting device.
The 6000/6100 series can also be used for a unique and cost effective 3D Rhinestone look. No transfer mask needed.

- Suitable for cotton, polyester and mixed fabrics
- A polyester film and therefore it is possible to transfer print with sublimation paper
- Washability: up to 60°C
- Material thickness: 270µ

Due to different quality of garments & heat presses, we recommend to test the materials before any application.



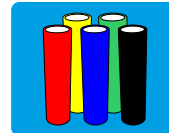
Roll sizes:
500mm x 25m, approx 20" x 27 yds
other dimensions available on request



Suitable for: 100% Cotton,
Cotton/Polyester/Acrylic Mixtures



270µ 10,6 mil	Carrier	Copolyester hotmelt
	Material	Polyester rough glitter face film
		Pressure sensitive adhesive
		Polyester film 100µ



For best results we recommend to store the rolls vertically and away from heat, moisture & direct sunlight



Hot or warm peel



Yes on PU Flex



Wash textile inside out

60°C 140°F	DO NOT DRYCLEAN	DO NOT TUMBLE DRY	DO NOT USE BLEACH
---------------	-----------------	-------------------	-------------------

Please wait 24 hours before washing & stretching



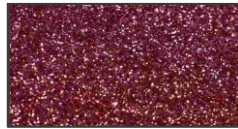
🌡️	165 °C = 329 °F
🕒	15 sec.
📊	3-4 bar ≈ 43-58 psi ≈ 3-4 Kgf/cm ² medium pressure



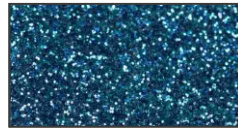
6000 - Standard colours:



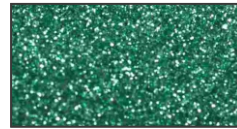
01 - WHITE



61 - PINK



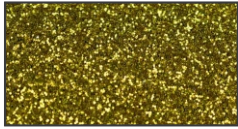
65 - SKY BLUE



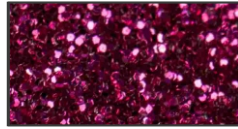
74 - LIGHT GREEN



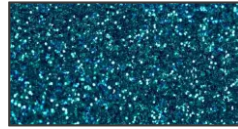
98 - LIGHT MULTI COLOUR



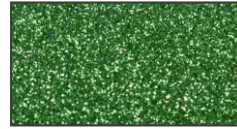
18 - YELLOW



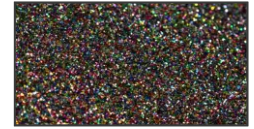
62 - FUCHSIA



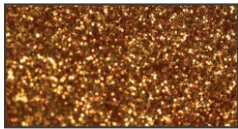
64 - SAPPHIRE



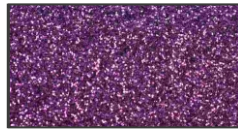
78 - MEDIUM GREEN



99 - MULTI COLOUR



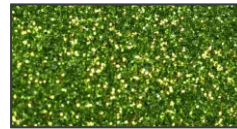
19 - TANGERINE



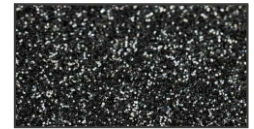
76 - VIOLET



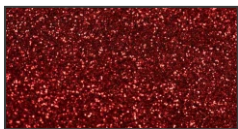
06 - ROYAL BLUE



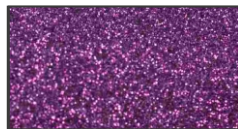
67 - APPLE GREEN



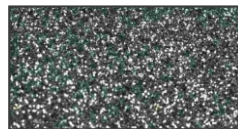
02 - BLACK



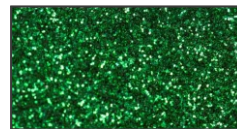
08 - RED



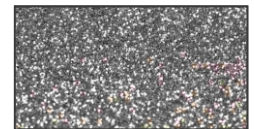
77 - LAVENDER



96 - PLATINUM



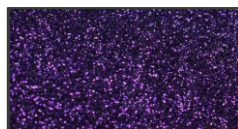
04 - GREEN



30 - SILVER



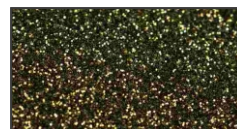
72 - CARDINAL RED



14 - PURPLE



68 - AQUA



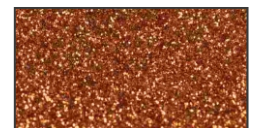
95 - BROWN



20 - GOLD

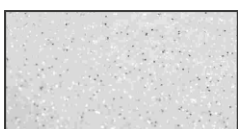


60 - ROSE GOLD



97 - COPPER

6100 - Specials:



01 - WHITE MIX



92 - GOLD MIX



89 - BLUE MIX

Actual colours may be different. Please ask for samples to see the real colour.



93 - PEARL



94 - MUSTARD MIX



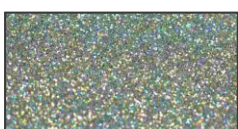
88 - GREEN MIX



40 - NEON YELLOW



42 - NEON ORANGE



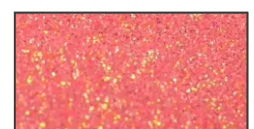
30 - SILVER MIX



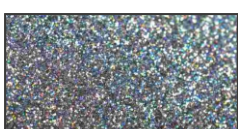
90 - RED MIX



41 - NEON GREEN



43 - NEON PINK



99 - MIXED COLOUR



91 - PINK MIX



63 - NEON BLUE



62 - NEON FUCHSIA

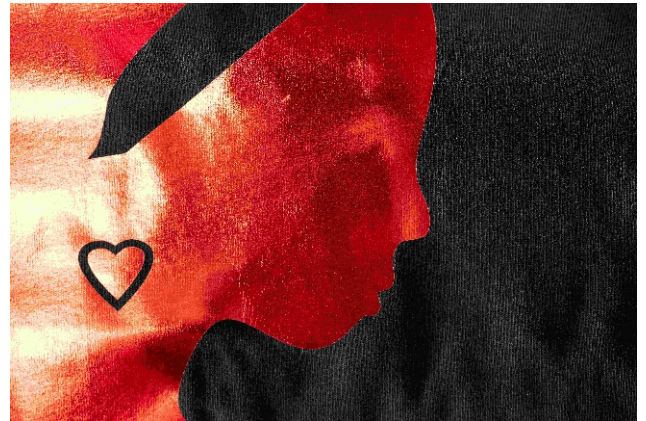
NOVA-FLEX® 6200 PU SOFT

The 6200 PU Soft series consists of thin and stretchable PU-flex films with a metallic/holographic effect.

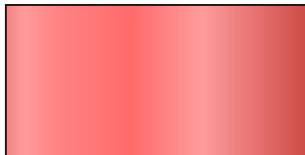
It can be used on all types of plotters and cutters. Thanks to the self-adhesive polyesterliner you will be able to cut small letters and reposition your cut design before pressing.

- Suitable for cotton, polyester and mixed fabrics
- Available in 10 colours and different effects
- Washability: up to 40°C

Due to different quality of garments & heat presses, we recommend to test the materials before any application.



Metallic colours:



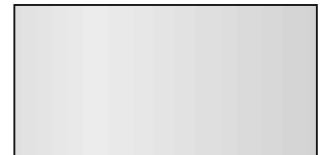
08 - RED



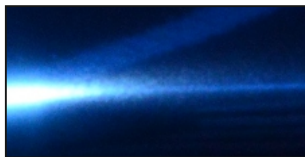
20 - GOLD



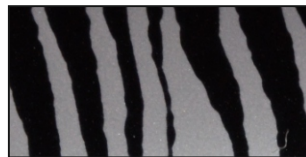
60 - ROSE GOLD



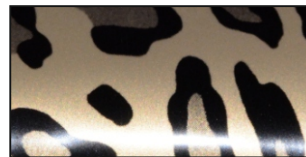
30 - SILVER



06 - ROYAL BLUE



90 - ZEBRA



91 - CHEETAH



92 - SNAKE

Holographic colours:



80 - SEQUIN

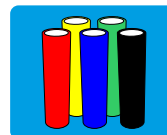


81 - SPECTRUM

Actual colours may be different. Please ask for samples to see the real colour.



30µ 1,2 mil	Carrier Material	PU hotmelt
		Metalized gloss face film
		Pressure sensitive adhesive
		Polyester film 75µ



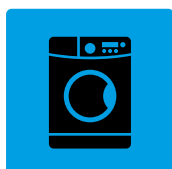
For best results we recommend to store the rolls vertically and away from heat, moisture & direct sunlight



Cold peel



Yes, on PU Flex



Wash textile inside out

40°C 104°F	DO NOT DRYCLEAN	DO NOT TUMBLE DRY	DO NOT USE BLEACH
---------------	-----------------	-------------------	-------------------

Please wait 24 hours before washing & stretching



160 °C = 320 °F
17 sec.
3-4 bar ≈ 43-58 psi ≈ 3-4 Kg/cm ² medium pressure

NOVA-FLEX 6500 GLOW IN THE DARK

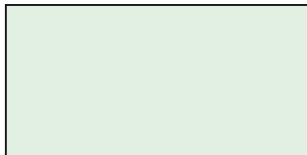
The 6500 Glow in the Dark series consists of PU-flex films with a phosphorescent effect.

The 6503 has a phosphorescent and reflective effect. Besides of a phosphorescent and reflective effect, the 6540, 6541 and the 6542 offer a neon effect.

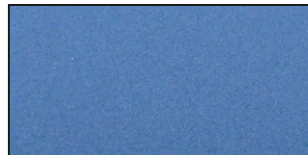
This film can be cut by all plotters and cutters. We recommend using a 60° blade.

- Suitable for cotton, polyester and mixed fabrics
- Washability, material thickness and reflectivity: please see our website: www.witpac.de

Due to different quality of garments & heat presses, we recommend to test the materials before any application.



50 - LIME GREEN



03 - BLUE



40 - NEON YELLOW

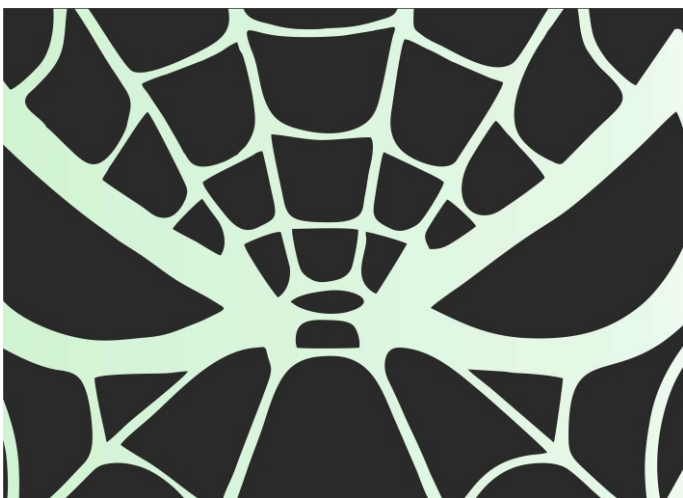


41 - NEON GREEN



42 - NEON ORANGE

Actual colours may be different. Please ask for samples to see the real colour.



NOVA-FLEX® REFLECTIVE 6400

The 6400 Reflective series consists of light reflecting PU-films which enable a higher visibility in the dark and at night.

Our silver reflective (6430/6431) is certified as DIN EN471 which means that the police and ambulance are able to be equipped with this film.

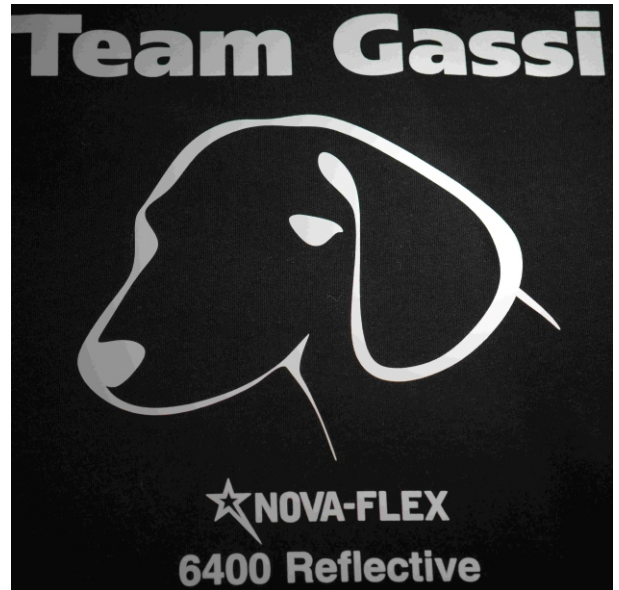
Our Reflective 6490 and 6491 are fire retardant films meaning they can be applied on firemen workwear.

Our Reflective 6485 is a reflective transfer to be applied on hotmelt or used with OKI laserprint.

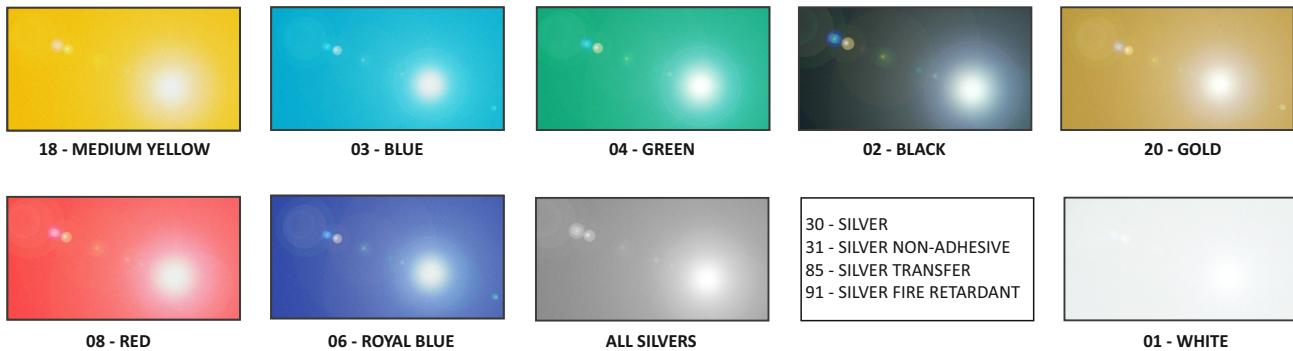
This film can be cut by all plotters and cutters. We recommend using a 60° blade.

- Suitable for cotton, polyester and mixed fabrics
- Available in 18 colours
- Washability, material thickness and reflectivity: see technical data sheet per product

Due to different quality of garments & heat presses, we recommend to test the materials before any application.



6400-Standard colours:



6400-Neon colours:



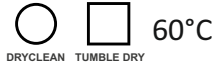
Actual colours may be different. Please ask for samples to see the real colour.

Reflectivity in CD

6402, 6404, 6406, 6408, 6418, 6443, 6465:	70
6403, 6420, 6440, 6442, 6499:	100
6401, 6490:	150
6430, 6431, 6491:	140

Washability:

6430, 6431, 6490, 6491:



60°C

all other colours:



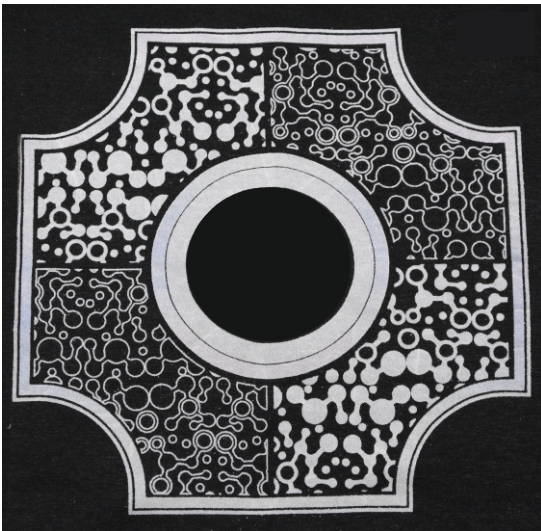
40°C

Application:

- 160°C
- 10 sec.
- medium to high pressure
- cold peel



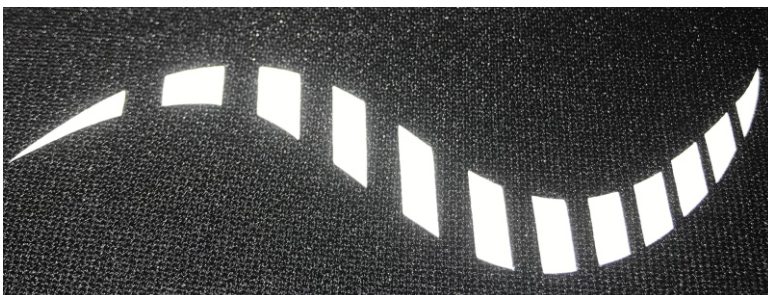
6440 - Neon Yellow



6485 - Silver transfer



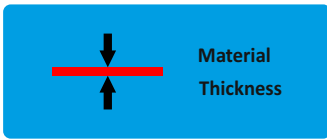
6431 - Silver



6430 - Silver



6499 - Holo Black



Glitter Effect (Solvent, Eco-Solvent Inkjet Printer) 7501 white, gloss

40µ 1,6 mil	Material	PU white face film Copolyester hotmelt
	Carrier	Pressure sensitive adhesive Polyester film 100µ

100% cotton,
polyester / acrylic
and mixtures

🌡️ 160 °C = 320 °F
⌚ 10 sec.
📊 3-4 bar ≈ 43-58 psi
medium pressure

Wash textile inside out
🧺 40°C 104°F
🚫 DO NOT DRYCLEAN
🚫 DO NOT TUMBLE DRY
🚫 DO NOT USE BLEACH

Reflective (Solvent, Eco-Solvent Inkjet & UV-Printer) 7510 white matt

240µ 9,4 mil	Material	PU white face film Copolyester hotmelt
	Carrier	Pressure sensitive adhesive Polyester film 100µ

100% cotton,
polyester / acrylic
and mixtures

🌡️ 150 °C = 302 °F
⌚ 8 sec.
📊 4-5 bar ≈ 58-72 psi
high pressure

Wash textile inside out
🧺 40°C 104°F
🚫 DO NOT DRYCLEAN
🚫 DO NOT TUMBLE DRY
🚫 DO NOT USE BLEACH

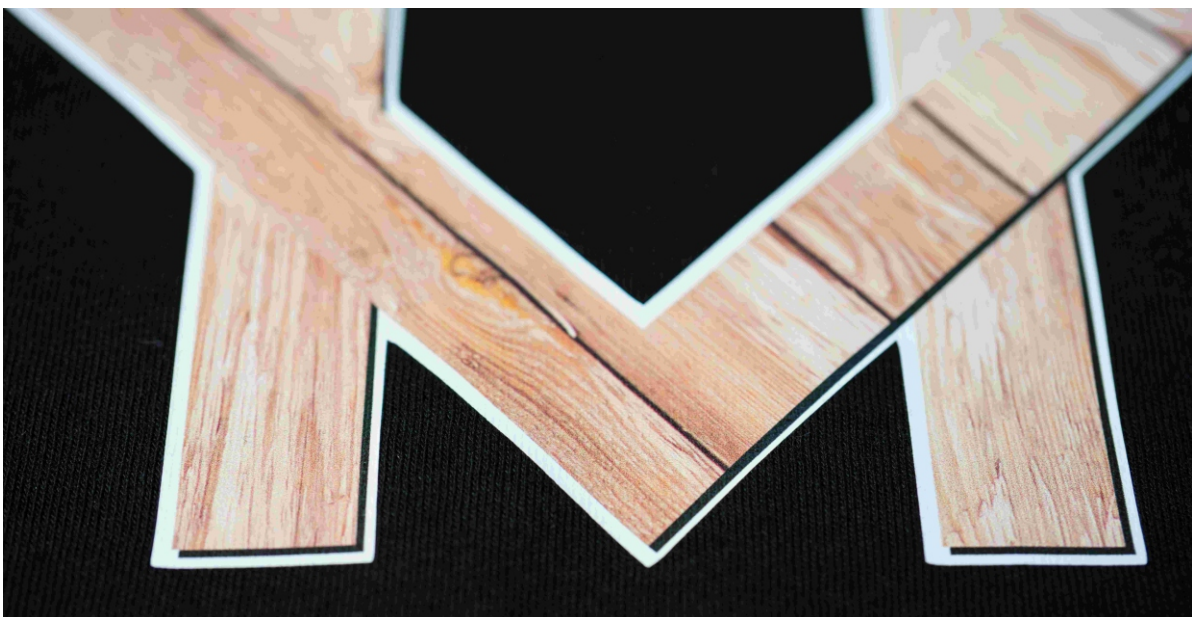
Glow / Phosphorescent (Solvent, Eco-Solvent Inkjet & UV-Printer) 7550 lime green

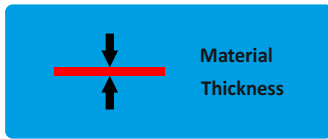
350µ 13 mil	Material	PU white face film Copolyester hotmelt
	Carrier	Pressure sensitive adhesive Polyester film 100µ

100% cotton,
polyester / acrylic
and mixtures

🌡️ 150 °C = 302 °F
⌚ 8 sec.
📊 4-5 bar ≈ 58-72 psi
high pressure

Wash textile inside out
🧺 40°C 104°F
🚫 DO NOT DRYCLEAN
🚫 DO NOT TUMBLE DRY
🚫 DO NOT USE BLEACH





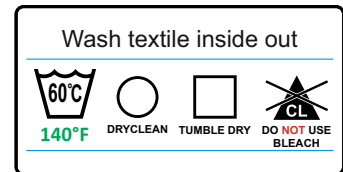
White (for Solvent, Eco-Solvent Inkjet printers)

7561 matt/7562 glossy

85µ 3,4 mil	Material	PU white face film Copolyester hotmelt
	Carrier	Pressure sensitive adhesive Polyester film 100µ

100% cotton, polyester / acrylic and mixtures

🌡️	150 °C = 302 °F
🕒	15 sec.
📊	3-4 bar ≈ 43-58 psi medium pressure



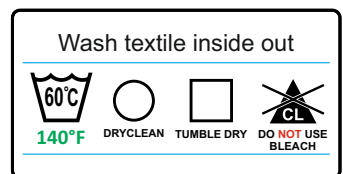
White (for Solvent, Eco-Solvent, Latex Inkjet printers)

7565 matt/7566 glossy

55µ 2,2 mil	Material	PU white face film Copolyester hotmelt
	Carrier	Pressure sensitive adhesive Polyester film 100µ

100% cotton, polyester / acrylic and mixtures also for nylon and coated fabrics

🌡️	150 °C = 302 °F
🕒	15 sec.
📊	3-4 bar ≈ 43-58 psi medium pressure



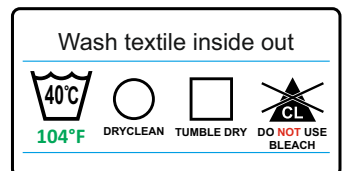
White (for Solvent, Eco-Solvent Inkjet printers with Sublistop layer)

7701 matt

135µ 5,3 mil	Material	PU white face film PU hotmelt
	Carrier	Pressure sensitive adhesive Polyester film 100µ

for sublimated fabrics

🌡️	135 °C = 275 °F
🕒	10 sec.
📊	3-4 bar ≈ 43-58 psi medium pressure



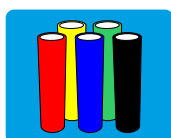
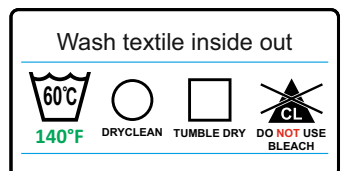
Transparent (for Solvent, Eco-Solvent Inkjet printers)

7563 semi matt/7564 glossy

40µ 1,6 mil	Material	PU transparent face film PU hotmelt
	Carrier	Pressure sensitive adhesive Polyester film 100µ

100% cotton, polyester / acrylic and mixtures

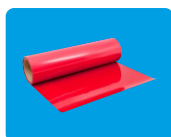
🌡️	150 °C = 302 °F
🕒	15 sec.
📊	3-4 bar ≈ 43-58 psi medium pressure



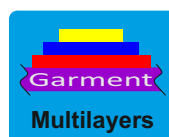
For best results we recommend to store the rolls vertically and away from heat, moisture & direct sunlight



Nova-Tacky AT003 polyester transfer tape, roll sizes: 500mm x 20m, approx 20" x 22yds other dimensions available on request



Nova-Flex Printable roll sizes: 500mm x 25m, approx 20" x 27yds other dimensions available on request



Yes, but only on PU Flex

PATCH-TWILL

NOVA 8700/8800 PATCH-TWILL

The 8700/8800 Patch-Twill series consists of polyester twill fabrics with a copolyester hotmelt which looks like embroidery.

It can be used as a patch and can be combined with Flex or Flock on top of it. Another way to decorate the Patch-Twill would be by printing with sublimation transfer paper.

The Patch-Twill is also available laminated with a self-adhesive polyester carrier (8800 series) to be able to be cut on a cutting plotter.

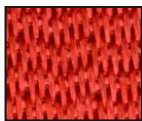
If patches are cut by cutting plotter the edges have to be covered with flex, flock or stitched by a sewing machine in order to prevent fraying. If cut by laser the edges are sealed.

Patch-Twill will also be available as pre-cut patches done by laser.

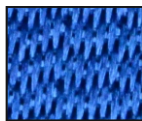
- Suitable for cotton, polyester and mixed fabrics
- Washability: up to 60°C
- Material thickness: 500µ



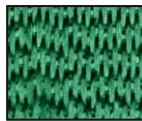
8701/8801
- WHITE



8708/8808
- RED



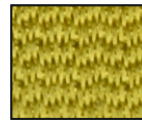
8706/8806 -
ROYAL BLUE



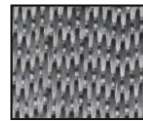
8704/8804 -
GREEN



8702/8802 -
BLACK



8720/8820 -
GOLD



8730/8830 -
SILVER



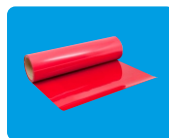
500µ 20 mil	Carrier Material	Copolyester hotmelt
		Polyester twill
		Adhesive layer
	Carrier	Polyester Film 100µ



Yes



For 8800 warm peel



Roll sizes:
500mm x 10m, approx 20" x 11 yds
other dimensions available on request



Wash textile inside out

 60°C 140°F	 DO NOT DRYCLEAN	 DO NOT TUMBLE DRY	 DO NOT USE BLEACH
-------------------	------------------------	--------------------------	--------------------------

Please wait 24 hours before washing



165 °C = 329 °F
First 5 sec then 15 sec on hotmelt side
3-4 bar ≈ 43-58 psi ≈ 3-4 Kg/cm² medium pressure



Pantone® Reference for 1000 & 1500 Series

Article No	Article colour	Pantone colour	Article No	Article colour	Pantone colour
01	white	-	65	sky blue	2915U
02	black	3U	66	airforce blue	659U
03	neon blue	2925U	67	apple green	375U
04	green	349U	68	aqua green	322U
05	navy blue	296U	69	military green	5743U
06	royal blue	647U	70	old gold	874U
07	forest green	553U	71	aubergine	518U
08	red	187U	72	cardinal red	208U
09	bordeaux	216U	73	bright red	032U
10	yellow	235U	74	light green	366U
11	light grey	428U	75	glacier blue	291U
12	grey	430U	76	violet	665U
13	turquoise	3155U	77	deep orange	1585U
14	purple	273U	78	dark choco	4695U
15	orange	164U	79	light choco	476U
16	brown	4625U	80	lilac	649U
17	beige	7401U	81	tiffany blue	319U
18	med. yellow	123U	82	ocean blue	2905U
19	lem. yellow	3955U	83	aqua blue	308U
20	gold metallic	871U	85	pink violet	256U
21	light gold met.	872U	86	blue violet	2655U
28	rose red	192U	88	lime	395U
30	silver metallic	877U	89	light brown	471U
31	light silver met.	1007U	90	pumpkin	137U
33	light navy blue	295U	91	cornflower blue	279U
40	neon yellow	809U	92	mint	3125U
41	neon green	802U	93	thistle	2717U
42	neon orange	804U	94	tomato red	178U
43	neon pink	806U	95	blue	286U
44	neon red pink	806U2X	96	dark violet	249U
50	red orange	165U2X	97	rose	206U
60	dusty rose	680U	98	magenta	1905U
61	baby pink	189U	99	salmon	172U
62	fuchsia	215U			
63	grass green	360U			
64	sapphire	7461U			

Pantone® colour references provided are only intended as a guide.

TRANSFER AND WASHING CONDITIONS

		1000 - Premium		1000W - Weedex		1500 - High Gloss		1500 - 35sek.		1600 - Specials		1800 - PU Glitter		1900 - Holographic		2500 - 3D		3900 - Nylon		4000 - Subli-Stop		6000 - PET Glitter		6200 - Metallic		6400 - Reflective		6550 - Glow		7561/62/65/66		7563/7564		7501/7510/7550		7701 - Sublistop		8700 - Patch-Twill (8800)	
TRANSFER- CONDITION	Temperature (°C)	155-165	160	135-165	165	155-165	150	160	165	150	145	140	165	160	150-160	150	150	150-160	150	150	150-160	150-160	150-160	150-160	150-160	150-160	150-160	150-160	150-160	135	165	150-160	135	165	150-160	135	165		
	Pressure (bar)	3-4	3-4	3-4	3-4	3-4	3-4	3-4	3-4	3-4	3-4	3-4	3-4	3-4	3-4	3-4	3-4	3-4	3-4	3-4	3-4	3-4	3-4	3-4	3-4	3-4	3-4	3-4	3-4	3-4	3-4	3-4	3-4	3-4	3-4	3-4	3-4		
	Time (Sec.)	17-20	17-20	3-8	10	17-20	15	15	15	15	25-30	10	10	15	17	10	10	10	10	10	10	10	10	10	10	10	10	10	15	15	8-10	10	10	10	10	10	10	10	
	Peel	W/C	W/C	W/C	C	W	C	C	C	C	W	C	W	W	C	C	C	C	C	C	C	C	C	C	C	C	C	C	W	W	W/C	W	W	W	W	W	W	W	
WASHING- CONDITION	Washing (°C)	95	95	60	60	60	60	60	60	60	60	60	60	60	60	60	60	60	60	60	60	60	60	60	60	60	60	60	60	60	60	60	60	60	60	60	60	60	
	Tumble Dry	+	+	+	-	+	-	-	-	-	+	-	-	-	-	-	-	-	-	-	-	-	-	-	-	-	-	-	-	-	-	-	-	-	-	-	-	-	-
	Dryclean	+	+	+	-	+	-	-	-	-	-	-	-	-	-	-	-	-	-	-	-	-	-	-	-	-	-	-	-	-	-	-	-	-	-	-	-	-	-
CHARACTERISTICS	Thickness (µ)	90	90	85	90	100	40	40	40	580	75	105	270	30	10-400	180-330	85	40	40	40	40-350	135	500																
	Film	PU	PU	PU	PU	PU	PET	PET	PET	PU	PU	PU	PET	PU	PU	PU	PU	PU	PU	PU	PU	PU	PU	PET Fabric															
	Hotmelt	PU	PU	Co. PET	Co. PET	Co. PET	Co. PET	Co. PET	Co. PET	PU	PU	PU	Co. PET	PU	Co. PET	Co. PET	Co. PET	Co. PET	Co. PET	Co. PET	Co. PET	Co. PET	Co. PET	Co. PET	Co. PET	Co. PET	Co. PET	Co. PET	Co. PET	Co. PET	Co. PET	Co. PET	Co. PET	Co. PET	Co. PET	Co. PET	Co. PET	Co. PET	

All data and information in this catalogue are to the best of our knowledge and the result of testing in our laboratory



COMPETENCE IN HEAT TRANSFER.

WITPAC GmbH
Industrieweg 17
D-48493 Wettringen

Phone: +49 (0) 2557-929 63 66
Mail: info@witpac.de

Managing Director: Mr. W. K. Rollfs of Roelofs
VAT-ID.: DE300 924 151
EORI: DE63 279 914 412 67 51
District Court Steinfurt: HRB 10932

WWW.WITPAC.DE